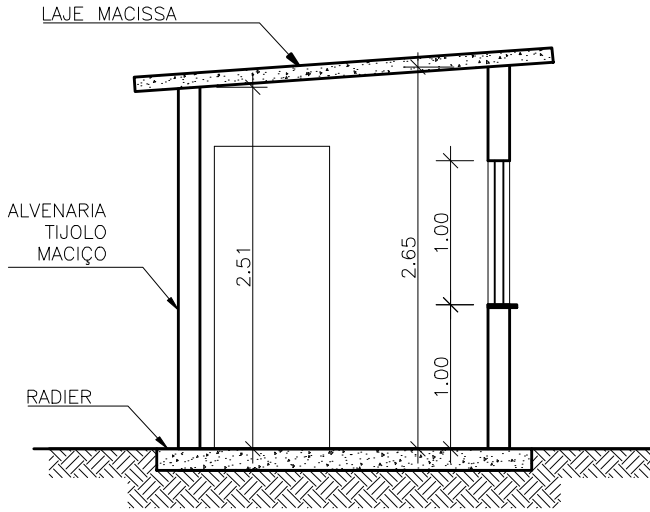
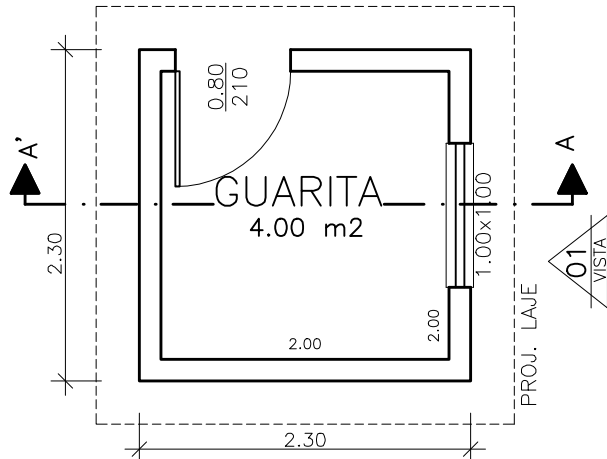


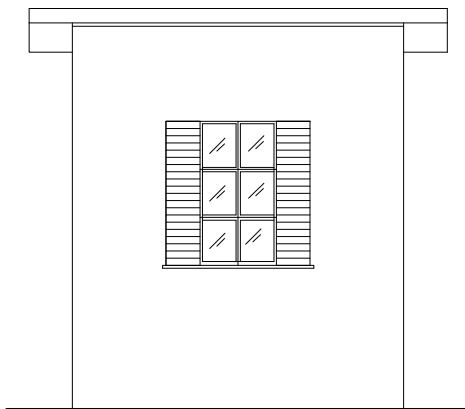
**DETALHE GUARITA**



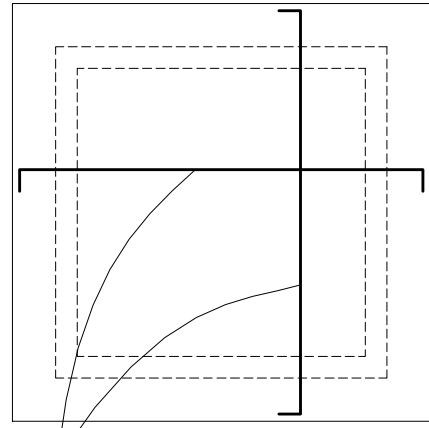
**CORTE A A'**  
ESC. 1:50



**PL. BAIXA - GUARITA**  
ESC. 1:50

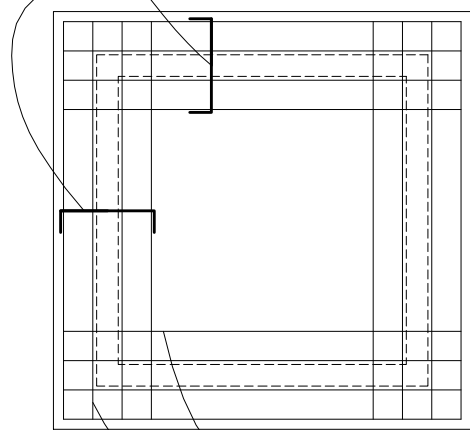


**VISTA 01**  
ESC. 1:50



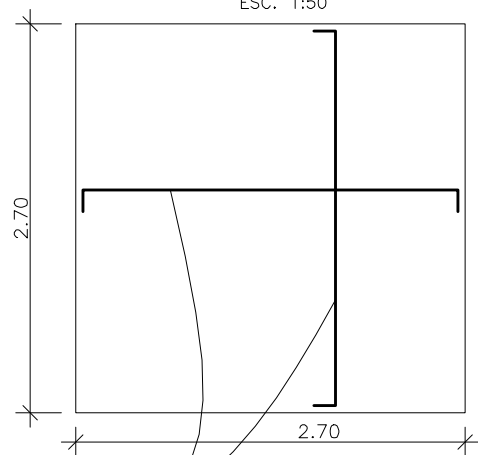
**LAJE - FERRAGEM**  
ESC. 1:50

4x20N Ø6.3 c/15 C=60/70



**LAJE - FERRAGEM**  
ESC. 1:50

4x4D Ø5.0 c/20 C=285



**RADIER - FERRAGEM**  
ESC. 1:50



**PREFEITURA MUNICIPAL DE SÃO LOURENÇO**

|          |   |  |  |         |  |
|----------|---|--|--|---------|--|
| TÍTULO   |   | AREROPORTO DE SÃO LOURENÇO<br>DETALHE DA GUARITA |  | DATA:   | FOLHA  |
| ESCALA   |   | VISTO  |  | 24/9/14 | 5/6  |
| INDICADA | ROGERIO A. DE MELLO<br><small>SECRETARIO MUNICIPAL DE INFRAESTRUTURA URBANA</small> | VISTO ENG.                                       | LUIZ FERNANDO RAMOS MARQUEZ<br><small>CREA MG 42.476/2</small> | DPTO.   | SMIU<br><small>(SECR. MUNIC. DE INFRAESTRUTURA URBANA)</small> |